

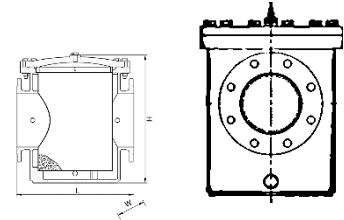
# STRAINER– BASKET TYPE

**Description:** Basket Type Strainers play a crucial role in safeguarding pipeline systems against undesirable solid impurities. These strainers utilize a basket-shaped element made of either perforated or wire mesh material, making them suitable for various applications, including sewage and clean water filtration. With their ample straining capacity, they effectively accumulate dirt and debris, facilitating smooth and efficient system operation.



## Material Specification

Parts	Main Materials	Optional Materials
Body Cover	Ductile Iron	Carbon Steel
		Stainless Steel
		Nickel Aluminum Bronze
Filter	SS 304	SS 304L, SS 316, SS 316L
Nuts	Bronze	Brass, SS 304, SS 316
Bushes	Teflon	PTFE 304
Seals	EPDM	NBR
Fasteners	8:8 (Galv.)	SS 304, SS 316



### Notes:

1. Different flange drillings are available, including ISO, EN, ANSI, and others.
2. The standard operating temperature range is -10°C to +80°C.
3. All RAL Colors are available.
4. Potable water certified coating is available.
5. Both thermoset and thermoplastic coatings are available.

### Application:

Strainers are used to collect residuals from the system. They are installed in the upstream of crucial devices such as regulation valves, watermeters, flow meters etc. to protect them from residuals

### Features:

- **Simplified Maintenance:** The design incorporates a cover assembly that facilitates easy cleaning, ensuring efficient product upkeep.
- **Accessory Availability:** An optional pivot arm accessory can be requested, designed to ensure hassle-free cover movement and reduce manual effort.
- **Effective Purging Mechanism:** The product features a blow-off plug. This unique component is designed specifically for flushing the filter, promoting its optimal operation and longevity.
- **Diverse Material Options:** We offer a variety of filter material options, including SS304, SS316, SS304L, and SS316L. These provide a broad range of solutions to cater to various operating environments and user requirements.
- **Flexible Mesh Size Options:** We offer various filter mesh sizes to cater to diverse filtering needs. This flexibility allows users to choose a mesh size that best fits their specific requirements.

# STRAINER– BASKET TYPE



## Maintenance

Regular maintenance is essential for Basket Type Strainers to ensure optimal performance. Cleaning is made effortless by simply removing the cover and extracting the strainer basket, allowing for quick and easy removal of accumulated debris and residues.

## Material Choices and Sizes

Our Basket Type Strainers offer versatile material choices to meet specific project requirements. While the standard filter material is perforated SS304, we provide options such as SS316, SS304L, or SS316L for enhanced compatibility. Additionally, different mesh sizes can be selected, ensuring precise filtration based on your specific needs.

## Pressure Indicators

Equipped with two manometer connections, our strainers enable efficient pressure monitoring. These connections facilitate accurate assessment of filter cleanliness through head loss measurement. Optional factory-installed manometers are available for added convenience.

## System Safeguard

Basket Type Strainers play a critical role in safeguarding vital system components, including pumps and control valves. By effectively collecting and removing debris from pipelines, they prevent potential damage. Monitoring head loss is an effective indicator of the need for cleaning, which can be easily accomplished by removing the top flange, ensuring uninterrupted system operation.

## DIMENSIONS (mm)

DN	100	125	150	200	250	300	350	400	450	500	600	700	800	1000	1200	1600
Height	368	421	473	581	701	728	825	921	1042	1127	1388	1583	1755	2579	2930	3560
Width	280	323	365	435	529	607	641	675	742	820	945	1088	1230	1490	1750	2300
Length	330	360	390	460	530	630	690	750	810	880	1000	1130	1250	1500	1800	2400
Blow-off Nut Size	32	32	50	50	50	50	50	50	50	50	50	50	50	50	50	50
Filter Mesh Size	3	3	5	5	5	5	5	5	5	5	5	5	5	5	5	5
Weight (kg)	42	56	73	122	179	264	305	335	390	569	962	1460	1896	2040	2690	5380

